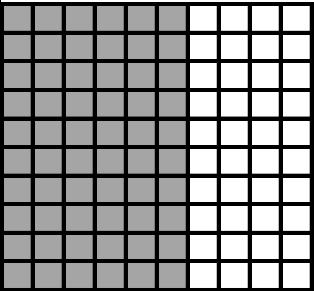
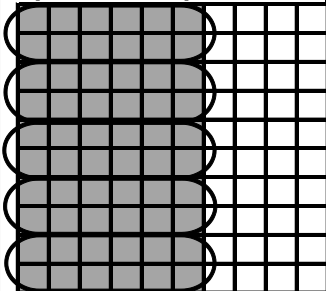


1 The model is shaded to represent sixty hundredths.



- A. $0.6 \times 5 = 3.0$
- B. $0.60 \div 5 = 0.12$

This model represents an equation. Which equation is represented?



- C. $6.0 \div 5 = 1.2$
- D. $0.12 \times 5 = 6.0$

4 In the decimal shown, what is the value of the underlined digit?

DECIMAL PLACE VALUE

| | | | | | | |
|------|---|---|---|----------|------------|-------------|
| ones | | | . | tenths | hundredths | thousandths |
| h | t | o | | | | |
| | 4 | 4 | . | <u>4</u> | 4 | 4 |

- A. 40,000
- B. 0.040
- C. 0.4
- D. 0.004

2 The table shows the lengths of common critters.

I'm an ant!

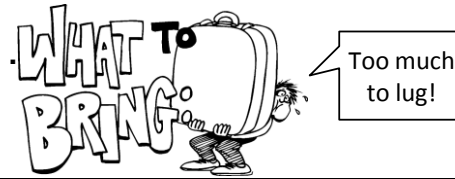
| Critter | Length (meter) |
|-------------------|----------------|
| Cockroach | 0.04 |
| Funnel web spider | 0.01 |
| Carpenter ant | 0.10 |
| Beetle | 0.017 |

Which number sentence correctly compares the lengths of two of the critters?

- A. $0.10 = 0.01$
- B. $0.017 > 0.10$
- C. $0.04 < 0.01$
- D. $0.01 < 0.10$

5 An airline has a policy of a 40-pound limit for any carry on luggage. Mr. Hansen had 20 pounds too much in his bag, so he evenly distributed the over limit into the bags of the other 4 family members. At check-in one bag was under the limit by 2 pounds each. Mrs. Hansen's bag was over the limit by 9 pounds. How many pounds were in the family's bag?

- A. 211 lbs.
- B. 209 lbs.
- C. 203 lbs.
- D. 201 lbs.



3 Nicole is making treat bags filled with candy for her birthday party. She wants to put the same number of pieces of candy in each of 12 bags. Nicole bought three bags of candy. Two of the bags had 56 pieces each. The third bag had half the amount of one of the first two bags. What is the greatest number of pieces of candy she can put in each treat bag?

- A. 9
- B. 12
- C. 14
- D. 11

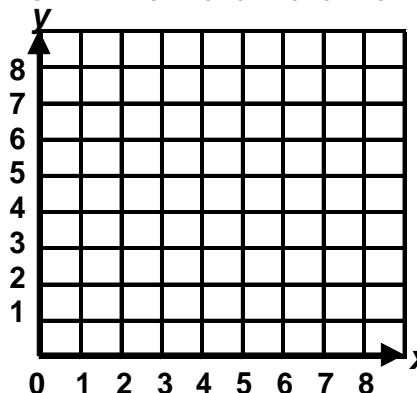
Frozen fish treats are candy to me!



6 The ordered pairs below represent three vertices of a square. (2, 2), (6, 2), (2, 6)

Which ordered pair could represent the location of the fourth vertex of this square?

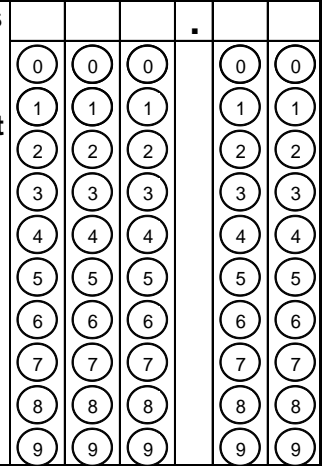
- A. (7, 2)
- B. (6, 6)
- C. (7, 6)
- D. (6, 7)



7 A cruise ship charges \$0.75 per minute for internet access. Rick used the internet four times:

- 1:11 - 1:28
- 8:15 - 8:33
- 11:19 - 11:27
- 5:29 - 5:52

What were the internet charges for Rick's cruise?



8 Melanie bought a carton of eighteen eggs. She used three eggs per day. Based on this information, which of the following statements is a reasonable conclusion?

- A. She will run out of all 18 eggs in less than a week.
- B. She uses one-fourth of the eggs per day.
- C. In three days she will have more than half the eggs left.
- D. She will have used 15 eggs in 4 days.

Save some of those eggs, so I can egg the wolf den!



9 Hector read three chapters of his science book over a two-week period. The three chapters were a total of 58 pages. The chapters represented 0.2 of the entire book. How many pages are in the science book?

| | | | | |
|----|--|--|--|--|
| 58 | | | | |
|----|--|--|--|--|

- A. 232
- B. 260
- C. 290
- D. 348

If 0.2 is 58, how much is 0.1? That's math, not science!

