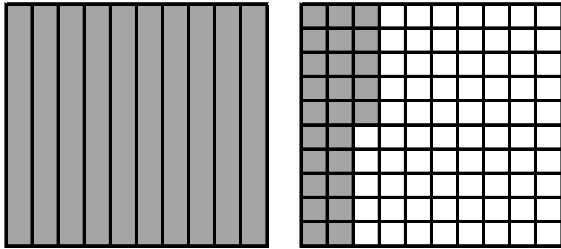


1 Which pair of decimals in the table below has the greatest difference?

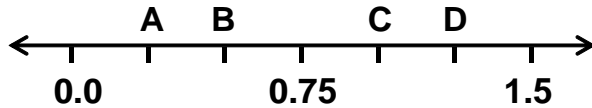
difference

	First Decimal	Second Decimal
A.	3.63	0.79
B.	4.2	1.335
C.	6.73	3.87
D.	5.002	2.15

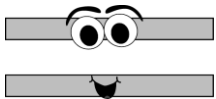
2 Look at the model of the decimal below.



What is the location of the decimal on the number line?



3 Which decimal or fraction below is NOT equivalent to 0.8?



Keep your eyes on the equal sign!

- A. $\frac{4}{5}$
- B. $\frac{80}{100}$
- C. 0.008
- D. $\frac{16}{20}$

4 Four friends compared gas mileage for their cars. Fred's car gets the best mileage at 24.6 miles per gallon. Bill's SUV gets the worst at 6.8 miles per gallon less than Fred's. Dale's truck gets 1.8 miles per gallon better gas mileage than Bill's SUV. The gas mileage for Justin's car is 2.5 miles per gallon better than Dale's. What is the gas mileage for Justin's car?

	Fred	Bill	Dale	Justin
A. 22.1 m.p.g.				
B. 18.4 m.p.g.	24.6	24.6		
C. 20.3 m.p.g.		<u>-6.8</u>		
D. 17.1 m.p.g.				

5 Twenty-nine inches of snow fell in a northern city during five months.

According to the information in the table, how many inches of snow fell in March?

Month	Snow (in inches)
November	2.56
December	4.9
January	6.4
February	8.25
March	

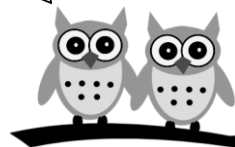
- A. 6.89
- B. 7.49
- C. 7.89
- D. Not here

6 Anthony bought a twin bed for his room. The bed cost \$219 plus \$16 tax and \$15 in delivery fees. His job pays \$8 per hour after payroll tax. How many hours will Anthony have to work to pay for it?

Whooo gets the twin bed?

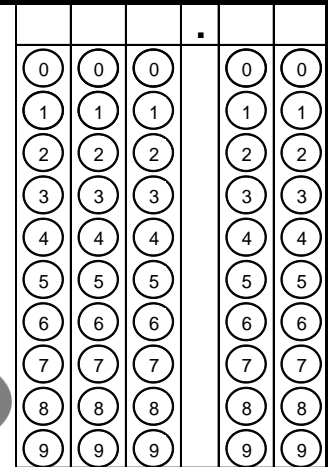
Whoooever makes the payments!

- A. 40
- B. 32
- C. 30
- D. 28



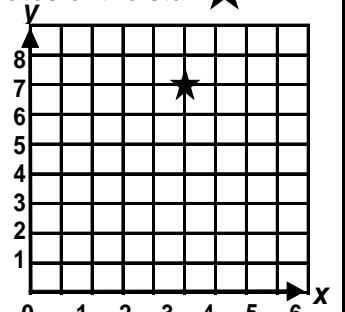
7 Soft drinks were on sale for \$2.40 each 12-pack. PTA bought 144 cans of soft drinks for the carnival. If they sell each can for \$0.75, how much profit will they make?

You can profit by not drinking too many sodas!

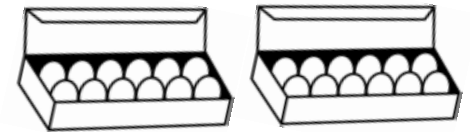


8 Which of the following describes the process of finding the coordinates of the star ★?

- A. Start at the origin and move along the x-axis to 5. Then move along the y-axis to 6.
- B. Start at the origin and move along the y-axis to 7. Then move along the x-axis to 6.
- C. Start at the origin and move along the y-axis to 7. Then move along the x-axis to 6.
- D. Start at the origin and move along the x-axis to 5. Then move along the y-axis to 7.



9 What is two-thirds of two dozen?



Who dozen't know that?



- A. 8
- B. 14
- C. 16
- D. 18